

The Complete Solution Your IoT/IoE data aggregated and analyzed Simple ...

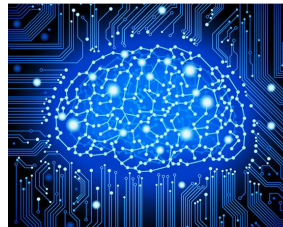
IoT Connectivity Platform

The **SensEnable** IoT Connectivity Platform is an end-to-end secure plug-and-play infrastructure solution that connects IoT devices and sensors to the cloud, offering large scale aggregation and real time analysis. The platform offers our customers rapid creation of a backend solution for any IoE/IoT/sensor device and acts as an enabler for data driven business models with increased revenue and product capitalization. The solution consists of several licensable components and is also available through the **SensLive** cloud service with access to data and analytical high level conclusions. Data range from simple n-dimensional sensor data to real time live video. Data is aggregated from millions of clients and can be redistributed in real time to millions of consumers through a **SensNet** Sensor Data Distribution Network. Specific vertical solutions are offered in Healthcare, Logistics, Manufacturing, Transportation, Retail, and Entertainment/Content Distribution.



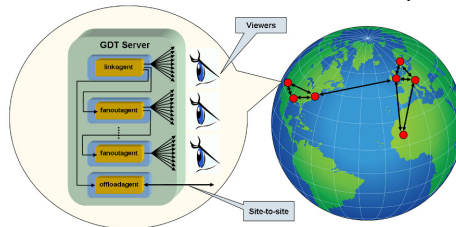
SensEnable is the core technology based on Prestinion's secure Global Data Transport, GDT, protocol and advanced server technology. It provides connectivity to the GDT backend data aggregation and re-distribution server. It is the key puzzle piece for any IoT solution.

SensAlytics is a graphical backend analytics solution, allowing for easy creation of powerful data processing flows for high level conclusions with visualization, report generation, alerts, etc. Data adapters allow custom solutions and connectivity. Graphical native clients (Mac, Windows, Linux) communicates to the cloud **SensAlytics** server for secure data processing. A library of pre-defined **SensAlytics** programs is available.



SensClient is a highly portable POSIX software library containing the GDT client agent, available for various embedded systems, Android/iOS platforms, and Linux systems. The client agent allows for secure cloud communication from any IoT/sensor device.

SensNet large scale data distribution networks for intra-site and inter-site live distribution of sensor data (including live H264 video streaming) scaling to millions of consumers/viewer and enables geographically distributed deployments.



SensVisual is a web based visualization server based on proven Apache and Node.js technologies. It allows easy selection of sensor streams for customized real time graphical or text representation views of sensor data. Video streams are represented as easily selectable TV channels.

SensHardware is a collection of hardware reference platforms with wireless connectivity (BLE, WiFi, 3G/4G), enabling customer specific sensor data to be injected into the **SensEnable** IoT connectivity platform.

Features

- Plug-and-play instant backend solution (the "backend story") for any device for faster time to market with reduced engineering cost and development risk.
- Production ready and proven cloud service for faster revenue ramp and reduced product risk allowing for new software-as-a-service and other cloud based business opportunities.
- Complete end-to-end solution from sensor hardware, client software, cloud communication, data aggregation, and backend analytics.
- Full solution for data management with real time view/analysis, big data storage/post analysis, and data re-distribution in a Sensor Data Distribution Network, SDDN.
- Industry's strongest security with multi-phase re-keying and up to 16 times 256 bit AES encryption.
- Industry's lowest latency allowing for true real-time view and analysis of sensor data.
- Industry's most diverse concurrent support of sensor data, ranging from n-dimensional data, streaming video/audio, to any custom format.
- Each sensor is globally addressable for remote sensor or device control.
- Industry's most advanced server architecture for high availability, multi customers provisioning, and unprecedented scalability to millions of clients and millions of viewer/consumers of sensor data through a large scale tree distribution network.
- Unique GDT protocol, providing security, SIP functionality, Firewall/NAT traversal, real time streaming, etc.
- Full SDK for client development with clear and simple APIs for client agent integration and porting.
- Powerful APIs for custom cloud post processing, analysis, data mining, redistribution.
- Professional services for customer or vertical customization.

